

# 100 WATTS

## SRW/SRP-100 SERIES AC-DC

### FEATURES:

- RoHS Compliant
- Universal 85-264 VAC Input
- Compact 3.3" x 5" x 1.5" Size
- 2 Year Warranty
- One to Four Tightly Regulated Outputs
- EN 60950-1 ITE Certification
- EN 60601-1 Medical Certification
- EMC to EN 61000-6-2 & EN 60601-1-2
- Optional Perforated Cover



OPEN CHASSIS

CHASSIS/COVER

### SAFETY SPECIFICATIONS

General	Protection Class: I
	Overvoltage Category: II
	Pollution Degree: 2
Underwriters Laboratories File E137708/E140259	UL 60950-1 2 <sup>nd</sup> Edition UL 60601-1 1 <sup>st</sup> Edition
TECEE CB SCHEME	CB Certificate per IEC 60950-1:2005 2 <sup>nd</sup> Edition +A1:2009 including all National Deviations CB Certificate per IEC 60601-1 (1988) 2 <sup>nd</sup> Edition A1, A2
UL Recognition Mark for Canada File E137708/E140259	CAN/CSA-C22.2 No. 60950-1-07, 2 <sup>nd</sup> Edition CAN/CSA-C22.2 No. 601-1-M90 with updates 1 and 2
TUV	EN 60950-1/A1:2010 EN 60601-1/A2:1995
CE	Low Voltage Directive

### MODEL LISTING

	MODEL NO.	OUTPUT 1	OUTPUT 2	OUTPUT 3	OUTPUT 4
SRW	SRW-100-4001	+3.3V/10A(2)	+5V/4A	+12V/2A(3)	-12V/1A
	SRW-100-4002	+5V/10A(2)	+24V/2A	+12V/2A(3)	-12V/1A
	SRW-100-4003	+5V/10A(2)	+24V/2A	+15V/2A(3)	-15V/1A
	SRW-100-4004	+5V/10A(2)	-5.2V/4A	+12V/2A(3)	-12V/1A
	SRW-100-4005	+5V/10A(2)	-5.2V/4A	+15V/2A(3)	-15V/1A
	SRW-100-4006	+5V/10A(2)	+3.4V/4A	+9V/1A	24V/.50A
	SRW-100-4007	+5V/10A(2)	+15V/3A	+12V/2A	-12V/1A
	SRW-100-4008	+5V/10A(2)	+3.3V/4A	+12V/2A	-5V/1A
	SRW-100-4009-IT	+3.3V/10A(2)	+5V/4A	+12V/2A	-5V/1A
	SRW-100-4010	+5V/5A	+15V/4A	+12V/2A(3)	9V/2.5A
	SRW-100-4011	+5V/10A(2)	-15V/2.2A	+15V/2A(3)	12V/1A
	SRW-100-4012	+5V/10A(2)	+3.3V/4A	+12V/2A(3)	-12V/1A
	SRW-100-3001	+5V/10A(2)	+12V/4A		-12V/1A
	SRW-100-3002	+5V/10A(2)	+15V/3A		-15V/1A
	SRW-100-3003	+5V/10A(2)	+3.3V/8A		12V/1A
	SRW-100-3004	+3.3V/5A	+5.8V/3A		-48V/1A
	SRW-100-2001	+12V/5A	-12V/4A		
	SRW-100-2002	+15V/5A	-15V/3A		
	SRW-100-2003	+12.5V/4A	+16V/2A		
	SRW-100-1001	3.3V/20A(4)			
	SRW-100-1002	5V/20A			
	SRW-100-1003	12V/8.3A			
	SRW-100-1004	15V/6.7A			
	SRW-100-1005	24V/4.2A			
	SRW-100-1006	28V/3.6A			
	SRW-100-1007	48V/2.1A			
	SRW-100-1008	40V/2.5A			
SRP	SRP-100-4001	+5V/12A(2)	+24V/3A	+12V/2A(3)	-12V/1A
	SRP-100-4002	+5V/12A(2)	+24V/3A	+15V/2A(3)	-15V/1A
	SRP-100-4003	+5V/12A(2)	-5V/4A	+12V/2A(3)	-12V/1A
	SRP-100-4004	+5V/12A(2)	-5V/4A	+15V/2A(3)	-15V/1A
	SRP-100-4005	+5V/12A(2)	+12V/3A	+8V/2A	-8V/1A
	SRP-100-3001	+5V/12A(2)	+12V/4A		-12V/1A
	SRP-100-2001	+5V/12A(2)	+24V/3A		

### OUTPUT SPECIFICATIONS

Total Output Power at 50°C	70W	Convection Cooled
	85W	Convection cooled w/1Sq. ft baseplate
	100W	200 LFM Forced Air
Output Voltage Centering	Output 1: ± 0.25%	(All outputs)
	Output 2: (SRW) ± 0.25%	at 50% load
	(SRP) ± 5.0%	
	Output 3: ± 2.0%	
	Output 4: ± 4.0%	
Output Voltage Adjust Range	Output 1: 95 - 105%	
	85 - 105%	(1001, 4001)
	Output 2: 95 - 105%	(SRW models only)
Load Regulation	Output 1: 0.5%	(10-100% load change)
	Output 2: (SRW) 0.5%	(10-100% load change)
	(SRP) 5.0%	(10-100% load change)
	Output 3: 1.0%	(10-100% load change)
	Output 4: 1.0%	(10-100% load change)
Source Regulation	Outputs 1 - 4: 0.5%	
Cross Regulation	Output 2: (SRW) 0.2%	(Output 1 load varied 50-100%)
	(SRP) 5.0%	
	Output 3: 0.2%	
	Output 4: 0.2%	
Output Noise	Outputs 1 - 4: 1.0%	
Turn on Overshoot	None	
Transient Response	Outputs 1 - 4	
Voltage Deviation	5.0%	
Recovery Time	2mS	
Load Change	50% to 100%	
Output Overvoltage Protection (optional)	Output 1: 110% to 150%	
Output Overpower Protection	Outputs 1 & 2: 110W Min.	
	Outputs cycle on/off, auto recovery	
Output Overcurrent Protection	Outputs 3 & 4: 110% Min.	
Hold Up Time	10 mS min., 100W output, 120V Input	
Start Up Time	1 Second	

### INPUT SPECIFICATIONS

Source Voltage	85 - 264 Volts AC
Frequency Range	47 - 63 Hz
Source Current	
True RMS	3A at 85V Input
Peak Inrush	30A
Efficiency	.68-.84 (varies by model)

### ENVIRONMENTAL SPECIFICATIONS

Ambient Operating Temperature Range	0° C to + 70° C
Derating	See Power Rating Chart
Ambient Storage Temp. Range	- 40° C to + 85° C
Temperature Coefficient	Outputs 1 - 4: 0.02%/°C

### GENERAL SPECIFICATIONS

Dielectric Strength <sup>(16)</sup>	
Reinforced Insulation	5656 VDC, Primary to Secondary, 1 Sec.
Basic Insulation	2121 VDC, Primary to Ground, 1 Sec.
Operational Insulation	707 VDC, Secondary to Ground, 1 Sec.
Leakage Current	<500uA Earth Leakage Current
Power Fail Signal (optional)	Logic low with input power failure 2 mS minimum prior to Output 1 drooping 1%
Remote Sense(single Output Models only)	250mV compensation of output cable losses
Mean-Time Between Failures	150,000 Hours min., MIL-HDBK-217F, 25° C, GB
Weight	1.00 Lbs. Open Frame 1.05 Lbs. w/Cover

### NOTES

Consult factory for alternate output configurations.  
 Consult factory for positive, negative or floating outputs.  
 Refer to Applications Information for complete output power ratings.  
 All specifications are maximum at 25° C, 100W unless otherwise stated, may vary by model and are subject to change without notice.  
 Specify optional perforated cover, power fail, overvoltage protection, isolated output 2, isolated output 4 or DC Input when ordering.



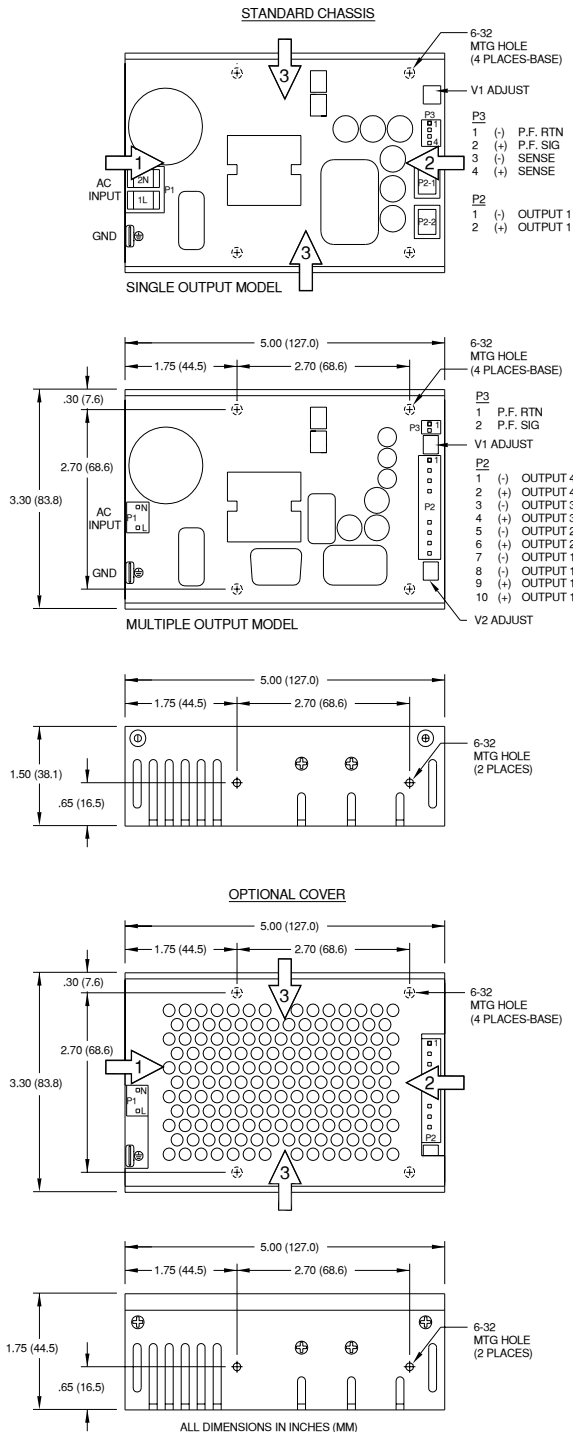
INTEGRATED

POWER DESIGNS 300 Stewart Road ■ Wilkes-Barre, PA 18706 ■ Phone: (570) 824-4666 ■ Fax: (570) 824-4843 ■ Email: sales@ipdpower.com ■ Web: www.ipdpower.com

## ELECTROMAGNETIC COMPATIBILITY SPECIFICATIONS

Electrostatic Discharge	EN 61000-4-2	+/- 8kV Contact Discharge +/- 8kV Air Discharge
Radiated Electromagnetic Field	EN 61000-4-3	80MHz-2.5GHz, 10m, 80% AM
EFT/Bursts	EN 61000-4-4	+/- 2 kV
Surges	EN 61000-4-5	+/- 1kV Differential Mode +/- 2 kV Common Mode
Conducted Immunity	EN 61000-4-6	.15 to 80MHz, 3V, 80% AM
Voltage Dips and Interruptions	EN 61000-4-11	30% Reduction, 500ms 95% Reduction, 10ms 60% Reduction, 1s (Criteria B) 95% Reductions, 5000ms
Radiated Emissions	EN 55022/11	Class B
Conducted Emissions	EN 55022/11	Class B

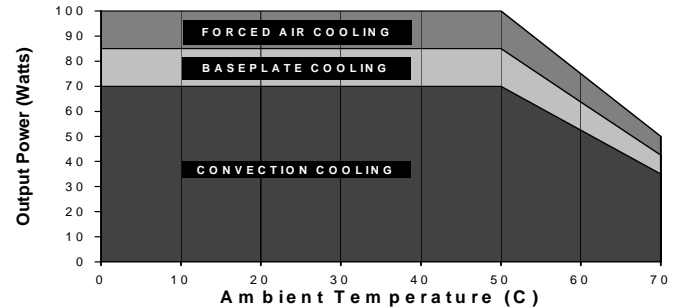
## SRW/SRP-100 SERIES MECHANICAL SPECIFICATIONS



## APPLICATIONS INFORMATION

- Each output can deliver its rated current but total output power must not exceed 70, 85 or 100 watts as determined by the cooling method.
- Rated 8A maximum with convection cooled only.
- Rated 1A maximum when convection cooled only.
- Rated 50 watts maximum output power when convection cooled, 70 watts when baseplate or forced air cooled.
- Free air convection cooling, 70 watts maximum output power.
- Base plate cooling rating of 85 watts requires a one square foot .09" thick aluminum area attached to bottom four mounting holes.
- Forced air cooling rating of 100 watts requires an air speed of 200 linear feet per minute flowing past a point one inch above the main isolation transformer.
- Semiconductor case temperatures must not exceed 110°C.
- Sufficient area must be provided around convection cooled power supplies to allow natural movement of air to develop.
- This product is intended for use as a professionally installed component within information technology and medical equipment.
- A minimum load of 10% is required on output one to ensure proper regulation of remaining outputs.
- Remote sense terminals may be used to compensate for cable losses up to 250mV. The use of a twisted pair is recommended as well as a decoupling capacitor (0.1 - 10µF) and a capacitor of 100µF/amp connected across the load side.
- Peak to peak output ripple and noise is measured directly at the output terminals of the power supply, without the use of the probe ground lead or retractable tip, 20 MHz bandwidth.
- This product includes only one fuse in the input circuit. In consideration of Clause 57.6 of UL 60601-1, a second fuse may be required in the end product.
- This product was type tested and safety certified using the dielectric strength test voltages listed in Table V of UL 60601-1. In consideration of Clause 20.4g, care must be taken to insure that the voltage applied to a reinforced insulation does not overstress basic insulation. Secondary to ground capacitors may need to be removed prior to performing a dielectric strength type test on the end product. It is highly recommended that the DC test voltages listed in DVB.1, Annex DVB are not exceeded during a production-line dielectric strength test of the assembled end product. Please consult factory for further information.
- This power supply has been safety approved and final tested using a DC dielectric strength test. Please consult factory before performing an AC dielectric strength test.
- Maximum screw penetration into chassis mounting holes is .125 inches.

## MAXIMUM OUTPUT POWER VS. AMBIENT TEMPERATURE



## CONNECTOR SPECIFICATIONS

P1	AC Input (Single)	Terminal block with 4-40 inch screws on 0.325 inch centers with #4 spade terminals.
P1	AC Input (Multiple)	.156 friction lock header mates with Molex 09-50-3031 or equivalent crimp terminal housing with Molex 08-50-0189 or equivalent crimp terminal.
P2	DC Output (Single)	6-32 screw down terminal mates with #6 ring tongue terminal. (10 in-lb max.)
P2	DC Output (Multiple)	.156 friction lock header mates with Molex 09-50-3101 or equivalent crimp terminal housing with Molex 08-50-0189 or equivalent crimp terminal.
G	Ground	.187 quick disconnect terminal.
P3	Option/Sense (Single)	.100 friction lock header mates with Molex 22-01-2047 or equivalent crimp terminal housing with Molex 6459 or equivalent crimp terminal.
P3	Option (Multiple)	.100 friction lock header mates with Molex 22-01-2027 or equivalent crimp terminal housing with Molex 6459 or equivalent crimp terminal.

## Recommended Air Flow Direction

- 1 – Optimum      2 – Good      3 – Fair