

185 WATTS

REL-185 SERIES AC-DC

FEATURES:

- RoHS Compliant
- Universal 85-264 VAC Input
- High Efficiency
- Advanced SMT Design
- Compact 4.2" x 7.0" x 1.5" Size
- 2 Year Warranty
- Fits 1U Applications
- EN 60950-1 ITE Certification
- EN 60601-1 Medical Certification
- Class B Emissions for EN 55011/22
- Harmonic Current per EN 61000-3-2
- EMC to EN 61000-6-2 & EN 60601-1-2
- Optional Chassis and Cover
- One to Four Outputs








OPEN CHASSIS



CHASSIS/COVER

SAFETY SPECIFICATIONS

General	Protection Class: I
	Overvoltage Category: II
	Pollution Degree: 2
 Underwriters Laboratories File E137708/E140259	UL 60950-1 2 nd Edition UL 60601-1 1 st Edition
	CB Certificate per IEC 60950-1:2005 2 nd Edition +A1:2009 including all National Deviations CB Certificate per IEC 60601-1 (1988) 2 nd Edition A1, A2
 UL Recognition Mark for Canada File E137708/E140259	CAN/CSA-C22.2 No. 60950-1-07, 2 nd Edition CAN/CSA-C22.2 No. 601-1-M90 with updates 1 and 2
	EN 60950-1/A1:2010 EN 60601-1/A2:1995
	Low Voltage Directive

MODEL LISTING

MODEL NO.	OUTPUT 1 ₍₈₎	OUTPUT 2 ₍₈₎	OUTPUT 3 ₍₇₎	OUTPUT 4 ₍₇₎
REL-185-4001	+3.3V/20A ₍₁₎	+5V/10A	+12V/2A	-12V/2A
REL-185-4002	+5V/20A ₍₁₎	+3.3V/10A	+12V/2A	-12V/2A
REL-185-4003	+5V/20A ₍₁₎	+3.3V/10A	+15V/2A	-15V/2A
REL-185-4004	+5V/20A ₍₁₎	-5V/10A	+12V/2A	-12V/2A
REL-185-4005	+5V/20A ₍₁₎	-5V/10A	+15V/2A	-15V/2A
REL-185-4006	+5V/20A ₍₁₎	+24V/3A	+12V/2A	-12V/2A
REL-185-4007	+5V/20A ₍₁₎	+24V/3A	+15V/2A	-15V/2A
REL-185-3001	+5V/20A ₍₁₎	+12V/5A		-12V/3A
REL-185-3002	+5V/20A ₍₁₎	+15V/4A		-15V/3A
REL-185-2001	+3.3V/20A ₍₁₎	+5V/10A		
REL-185-2002	+5V/20A ₍₁₎	+12V/8A		
REL-185-2003	+5V/20A ₍₁₎	+24V/4A		
REL-185-2004	+12V/10A	-12V/6A		
REL-185-2005	+15V/8A	-15V/5A		
REL-185-2006	+15V/6A	+24V/4A		
REL-185-2007	+35V/3.5A	+12V/5.2A		
REL-185-1001	2.5V/37A ₍₂₎			
REL-185-1002	3.3V/37A ₍₂₎			
REL-185-1003	5V/37A ₍₂₎			
REL-185-1004	12V/15.4A			
REL-185-1005	15V/12.3A			
REL-185-1006	24V/7.7A			
REL-185-1007	28V/6.6A			
REL-185-1008	48V/3.8A			
REL-185-1009	6.3V/29A ₍₂₎			

OUTPUT SPECIFICATIONS

Total Output Power at 50°C	135W	Convection Cooled
	185W	300 LFM Forced Air
Output Voltage Centering	Output 1: ± 0.5%	(All outputs)
	Output 2: ± 5.0%	at 50% load)
	Output 3: ± 5.0%	
	Output 4: ± 5.0%	
Output Voltage Adjust Range	Output 1: 95 - 105%	
Load Regulation	Output 1: 0.5%	(10-100% load change)
	Output 2: 5.0%	(10-100% load change)
	(4001,4,5, 2001) 10.0%	(20-100% load change)
	(4002,4003) 15.0%	(20-100% load change)
	Output 3: 5.0%	(10-100% load change)
	Output 4: 5.0%	(10-100% load change)
Source Regulation	Outputs 1 - 4: 0.5%	
Cross Regulation	Outputs 2 - 4: 6.0%	
Output Noise	Outputs 1 - 4: 1.0%	
Turn on Overshoot	None	
Transient Response	Outputs 1 - 4	
Voltage Deviation	5.0%	
Recovery Time	500µS	
Load Change	50% to 100%	
Output Overvoltage Protection	Output 1: 110% to 150%	
Output Overpower Protection	110-160% rated Pout, cycle on/off, auto recovery	
Hold Up Time	16 mS min., Full Power, 85V Input	
Start Up Time	5 Seconds, 120V Input	

INPUT SPECIFICATIONS

Source Voltage	85 - 264 Volts AC
Frequency Range	47 - 63 Hz
Peak Inrush Current	40A
Efficiency	82% Typical, Full Power, 230V, varies by model
Power Factor	0.95 (Full Power, 230V)

ENVIRONMENTAL SPECIFICATIONS

Ambient Operating	0° C to +70° C
Temperature Range	Derating: See Power Rating Chart
Ambient Storage Temp. Range	-40° C to +85° C
Temperature Coefficient	Outputs 1 - 4: 0.02%/°C

GENERAL SPECIFICATIONS

Dielectric Strength ₍₁₇₎	
Reinforced Insulation	5656 VDC, Primary to Secondary, 1 Sec.
Basic Insulation	2121 VDC, Primary to Ground, 1 Sec.
Operational Insulation	707 VDC, Secondary to Ground, 1 Sec.
Leakage Current	<300uA Earth Leakage Current
Power Fail Signal	Logic low with input power failure 10 mS minimum prior to Output 1 dropping 1%
Remote On/Off (optional)	Contact closure shuts off all outputs
Remote Sense	250mV compensation of output cable losses
Mean-Time Between Failures	100,000 Hours min., MIL-HDBK-217F, 25° C, GB
Weight	1.70 Lbs. Open Frame 2.70 Lbs. Chassis and Cover

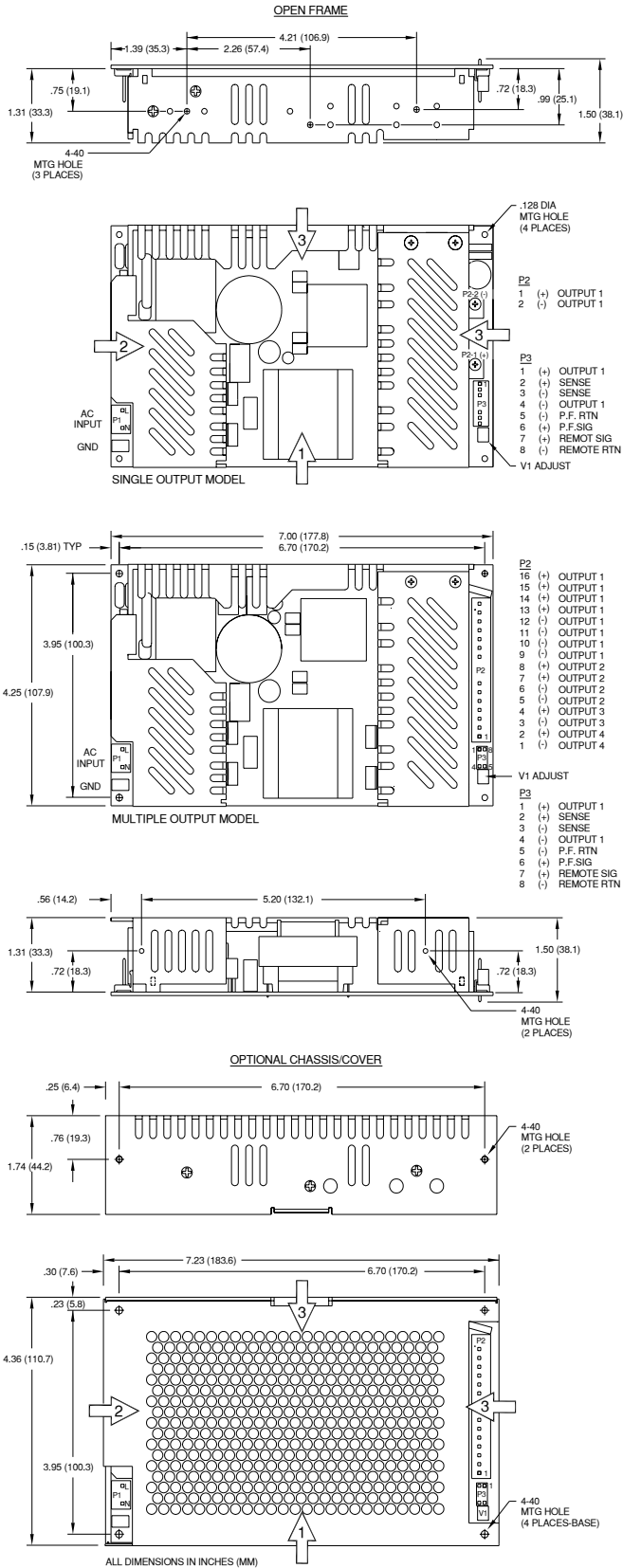
ELECTROMAGNETIC COMPATIBILITY SPECIFICATIONS

Electrostatic Discharge	EN 61000-4-2	+/-8kV Contact Discharge +/-8kV Air Discharge
Radiated Electromagnetic Field	EN 61000-4-3	80MHz-2.5GHz, 10/m, 80% AM
EFT/Bursts	EN 61000-4-4	+/-2 kV
Surges	EN 61000-4-5	+/- 1 kV Common Mode +/- 2 kV Differential Mode
Conducted Immunity	EN 61000-4-6	.15 to 80MHz, 10V, 80% AM
Voltage Dips and Interruptions	EN 61000-4-11	30% Reduction, 500ms 95% Reduction, 10ms 60% Reduction, 1s (Criteria B) 95% Reductions, 5000ms
Voltage Interruptions	EN 61000-4-11	95% Reduction, 5s
Radiated Emissions	EN 55011/22	Class B
Conducted Emissions	EN 55011/22	Class B
Harmonic Current Emissions	EN 61000-3-2	
Voltage Fluctuations and Flicker	EN 61000-3-3	

NOTES

Consult factory for alternate output configurations.
Consult factory for positive, negative or floating outputs.
Refer to Applications Information for complete output power ratings.
All specifications are maximum at 25° C, 185W unless otherwise stated, may vary by model and are subject to change without notice.
Specify optional chassis and cover or remote on/off when ordering.

REL-185 SERIES MECHANICAL SPECIFICATIONS



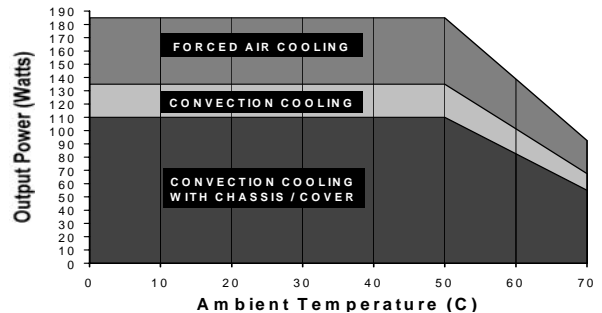
RECOMMENDED AIR FLOW DIRECTION

1 – Optimum 2 – Good 3 – Fair

APPLICATIONS INFORMATION

- Rated 15A maximum with convection cooling.
- Rated 27A maximum with convection cooling.
- Total power must not exceed 135 watts with convection cooling on open frame models except where noted.
- Total power must not exceed 185 watts with 300 LFM forced air cooling on open frame models.
- Total power must not exceed 110 watts with convection cooling and chassis/cover option.
- Total power must not exceed 185 watts with 300 LFM forced air cooling and chassis/cover option.
- Total current from Outputs 3 & 4 must not exceed 3 amps with convection cooling.
- Total current from Outputs 1 & 2 must not exceed 20 amps with convection cooling.
- Semiconductor case temperatures must not exceed 110°C.
- Each output can deliver its rated current but total output power must not exceed maximum power as determined by the cooling method stated above.
- Sufficient area must be provided around convection cooled power supplies to allow natural movement of air to develop.
- 300 linear feet per minute of airflow must be maintained one inch above any point of the heatsink in the direction shown when forced air cooling is required.
- This product is intended for use as a professionally installed component within information technology and medical equipment.
- A minimum load of 10% is required on output one to ensure proper regulation of remaining outputs.
- Remote sense terminals may be used to compensate for cable losses up to 250mV. The use of a twisted pair is recommended as well as a decoupling capacitor (0.1 - 10µF) and a capacitor of 100µF/amp connected across the load side.
- Peak to peak output ripple and noise is measured directly at the output terminals of the power supply, without the use of the probe ground lead or retractable tip, 20 MHz bandwidth.
- This product was type tested and safety certified using the dielectric strength test voltages listed in Table V of UL 60601-1. In consideration of Clause 20.4g, care must be taken to insure that the voltage applied to a reinforced insulation does not overstress basic insulation. Secondary to ground capacitors may need to be removed prior to performing a dielectric strength type test on the end product. It is highly recommended that the DC test voltages listed in DVB.1, Annex DVB are not exceeded during a production-line dielectric strength test of the assembled end product. Please consult factory for further information.
- This power supply has been safety approved and final tested using a DC dielectric strength test. Please consult factory before performing an AC dielectric strength test.
- Maximum screw penetration into bottom chassis mounting holes is .100 inches.
- Maximum screw penetration into side chassis mounting holes is .250 inches.
- To meet emissions specifications, all four mounting hole ground pads must be electrically connected to a common metal chassis. Chassis/cover option recommended.
- This product includes only one fuse in the input circuit. In consideration of Clause 57.6 of UL 60601-1, a second fuse may be required in the end product.

MAXIMUM OUTPUT POWER VS. AMBIENT TEMPERATURE



CONNECTOR SPECIFICATIONS

P1	AC Input	.156 friction lock header mates with Molex 09-50-3031 or equivalent crimp terminal housing with Molex 2478 or equivalent crimp terminal.
P2	DC Output (Single)	6-32 screw down terminal mates with #6 ring tongue terminal. (10 in-lb max)
P2	DC Output (Multiple)	.156 friction lock header mates with Molex 09-50-3161 or equivalent crimp terminal housing with Molex 2478 or equivalent crimp terminal.
G	Ground	.187 quick disconnect terminal.
P3	Option/Sense (Single)	.100 friction lock header mates with Molex 50-57-9008 or equivalent crimp terminal housing with Molex type 71851 or equivalent crimp terminal.
P3	Option/Sense (Multiple)	.100 breakaway header mates with Molex 22-55-2081 or equivalent crimp terminal housing with Molex type 71851 or equivalent crimp terminal.